

Parama Residences in Las Piñas City

Parama Residences - Project Brief

Take a step back from the stresses of your fast-paced urban life. Move into a lush tropical sanctuary where you can live life unhurried. Developed by the country's leader in resort-inspired communities, DMCI Homes. Exclusively for you and your family.

Parama Residences is DMCI Homes' latest development in Las Piñas City offering young families and professionals in the area who seek a relaxing environment, commercial areas and key establishments.

Its 7 buildings house units designed for utmost comfort as well as an amenity area to make you feel like everyday is a vacation. Parama Residences - a refreshing way to live.

Parama Residences - Location Plan

The project is located along Alabang-Zapote, near SM City Las Piñas. May it be offices, schools or other establishments; everything you need is just a few minutes' drive away.

HOW TO GET THERE?

Take EDSA heading to Baclaran. Make a left to Roxas Boulevard to get to Coastal Road. Then take Zapote exit. Go straight to Alabang-Zapote Road. Project site is on the left.

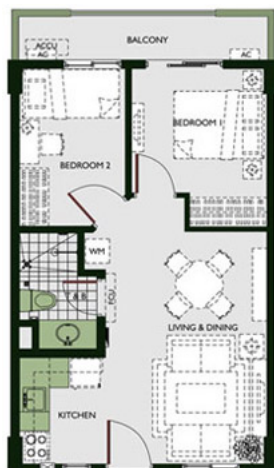


Parama Residences - Site Development Plan

Live completely worry free! Let your community work wonders for the peace, comfort, and security of your family.



Parama Residences - Floor Plans



2-BEDROOM UNIT WITH BALCONY Approx. Gross Floor Area: 57.50 - 60.50 sqm

AREA ALLOCATION

LIVING & DINING	19.15 sqm
KITCHEN	4.35
BEDROOM 1	9.50
BEDROOM 2	8.00
TOILET & BATH	4.00

UNIT AREA:	45.00 sqm
BALCONY	5.50 - 8.50
SERVICE AREA	7.00

APPROX. GROSS FLOOR AREA: 57.50 - 60.50 sqm



2-BEDROOM UNIT WITH BALCONY Approx. Gross Floor Area: 62.00 - 65.00 sqm

AREA ALLOCATION

LIVING & DINING	17.30 sqm
KITCHEN	7.00
BEDROOM 1	10.40
BEDROOM 2	9.80
TOILET & BATH	5.00

UNIT AREA:	49.50 sqm
BALCONY	5.50 - 8.50
SERVICE AREA	7.00

APPROX. GROSS FLOOR AREA: 62.00 - 65.00 sqm



TANDEM UNIT WITH BALCONIES

Approx. Gross Floor Area: 115.00 sqm

AREA ALLOCATION

LIVING & DINING	24.85 sqm
KITCHEN	13.00
BEDROOM 1	23.00
BEDROOM 2	8.30
BEDROOM 3	8.25
MAID'S ROOM	4.60
TOILET & BATH 1	4.00
TOILET & BATH 2	4.00
UNIT AREA:	90.00 sqm
BALCONY 1	5.50
BALCONY 2	5.50
SERVICE AREA 1	7.00
SERVICE AREA 2	7.00
APPROX. GROSS FLOOR AREA:	115.00 sqm

Parama Residences - Amenities and Facilities

Outdoor Amenities

- Clubhouse
- Jogging / Biking Path
- Kiddie Pool
- Lap Pool
- Lounge Area
- Open Lawn / Picnic Grove
- Gazebo / Cabana
- Landscaped Gardens
- Pool Deck
- Arrival Court
- Palm Promenade
- Children's playground with Integrated Multilevel Play System
- Basketball Court / Playcourt
- Shower Area

Indoor Amenities

- Game Room
- Landscaped Atriums
- Entertainment Room
- Function Hall
- Fitness Gym

Facilities

- Main Entrance Gate
- Perimeter Fence
- 24-hour Security
- CCTV Cameras
- Water Station
- Laundry Station





