

Fairlane Residences in Pasig City

Fairlane Residences - Project Brief



Elevate your way of living and experience rare exclusivity with DMCI Homes' newest residential landmark in Kapitolyo, Pasig City. Standing proud along West Capitol Drive, Fairlane Residences features modern tropical design and thoughtfully designed spacious units that suit your lifestyle needs.



Fairlane Residences - Location Plan

Address: West Capitol, Kapitolyo, Pasig City, NCR, 1603

Commercial Establishments

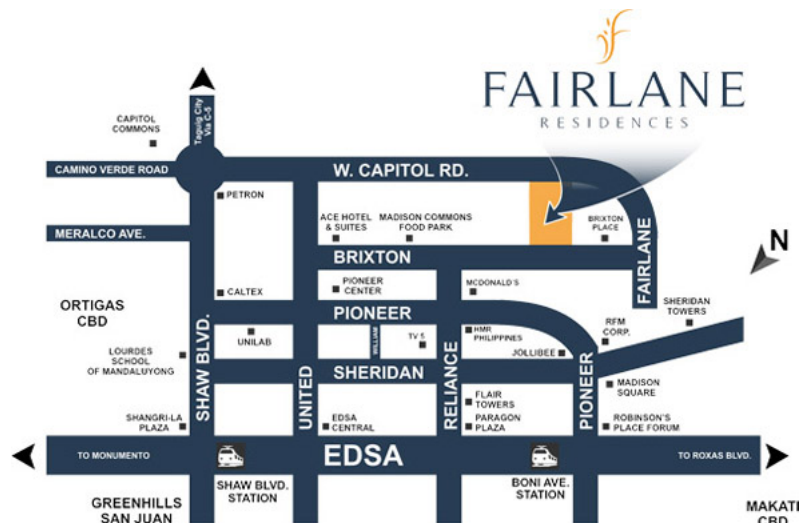
- Capitol Commons: 1.3 km - 3 mins
- Forum Robinsons Pioneer: 1.6 km - 7 mins
- Greenfield District: 1.5 km - 4 mins
- Pioneer Centre Supermart: 0.8 km - 4 mins
- Robinsons Galleria: 2.9 km - 19 mins
- Shangri-La Mall: 1.6 km - 6 mins
- SM Megamall: 0.7 km - 3 mins

Schools

- La Consolacion College - Pasig: 7.4 km - 15 mins
- Little Clarion Learning Center: 2 km - 6 mins
- Lourdes School of Mandaluyong: 2.1 km - 6 mins
- Saint Pedro Poveda College: 13.2 km - 26 mins
- St. Paul College Pasig: 2 km - 6 mins
- University of Asia and the Pacific: 3 km - 8 mins

Hospitals

- Medical Plaza Ortigas: 1.7 km - 10 mins
- Rizal Medical Center: 2.6 km - 14 mins
- St. Luke's Medical Center Global City: 5 km - 22 mins
- The Medical City: 4.3 km - 22 mins
- Victor R. Potenciano Medical Center: 2.4 km - 11 mins



Fairlane Residences - Site Development Plan

Rising 50 residential levels and 6 parking levels from 6,105 sqm of prime land, this single-tower development features Modern Tropical architecture and DMCI Homes' building innovation, Lumiventt.

Security

Lighted perimeter fence and entrance gate with guard house and car barriers, 24/7 roving security and CCTV cameras at strategic locations.

Utilities

Overhead water tank, underground cistern, centralized garbage disposal area, sewage treatment facility, full back up power, automatic fire sprinkler and fire suppression system at hallways, fire hoses at the hallway near stairwell.

Property

Management

Office

Services

Security for common areas, housekeeping services in common areas, utilities application assistance, general maintenance of common areas.



Fairlane Residences - Building Features and Plans

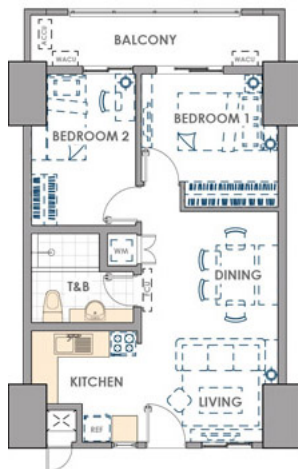
From 'lumen' meaning light and 'ventus' meaning wind, Lumiventt technology allows ambient light and fresh air to permeate the building and all unit spaces within. Moreover, Fairlane Residences features extended patios aside from the garden atriums every five floors.

- Deck Utility/ Service Area
- Garbage Rooms
- Passenger Elevators
- Fire Alarm & Automatic Sprinkler System
- Landscaped Atriums
- Provision for CCTV
- Fire Cabinets
- Mailbox Area
- Reception Lobby
- Fire Exit
- Parking Space
- Sky Patio (Lumiventt Technology)



Fairlane Residences - Floor Plans

Fairlane Residences offers larger-than-usual unit spaces. Generously laid out 2-Bedroom and 3-Bedroom unit configurations and your own balcony give you more room for greater possibilities.

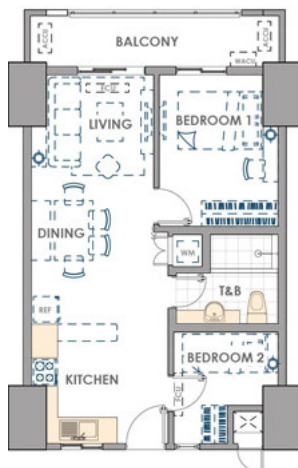


2-BEDROOM A INNER UNIT

AREA ALLOCATION

LIVING & DINING	19.90 sqm
KITCHEN	7.40
BEDROOM 1	10.75
BEDROOM 2	10.05
TOILET & BATH	5.90
BALCONY	8.00

APPROX. GROSS FLOOR AREA: 62.00 sqm

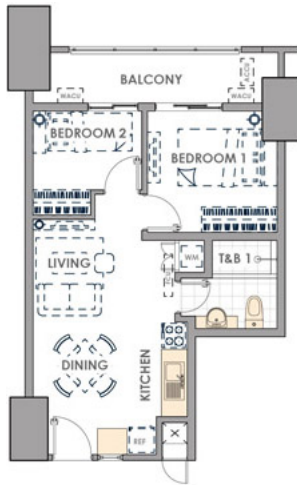


2-BEDROOM B INNER UNIT

AREA ALLOCATION

LIVING & DINING	21.60 sqm
KITCHEN	7.70
BEDROOM 1	11.35
BEDROOM 2	7.45
TOILET & BATH	5.90
BALCONY	8.00

APPROX. GROSS FLOOR AREA: 62.00 sqm

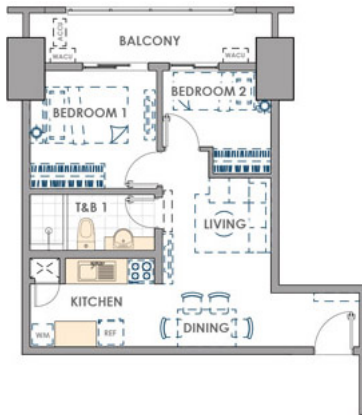


2-BEDROOM C INNER UNIT

AREA ALLOCATION

LIVING & DINING	14.30 sqm
KITCHEN	7.70
BEDROOM 1	10.30
BEDROOM 2	6.70
TOILET & BATH	5.50
BALCONY	8.00

APPROX. GROSS FLOOR AREA: 52.50 sqm

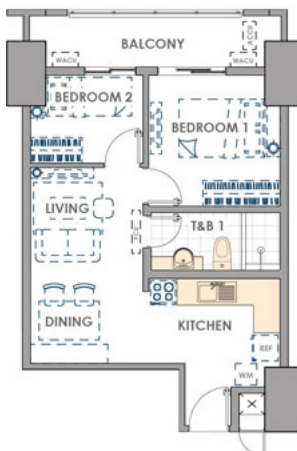


2-BEDROOM D INNER UNIT

AREA ALLOCATION

LIVING & DINING	16.25 sqm
KITCHEN	7.70
BEDROOM 1	10.00
BEDROOM 2	6.75
TOILET & BATH	4.80
BALCONY	8.00

APPROX. GROSS FLOOR AREA: 53.50 sqm

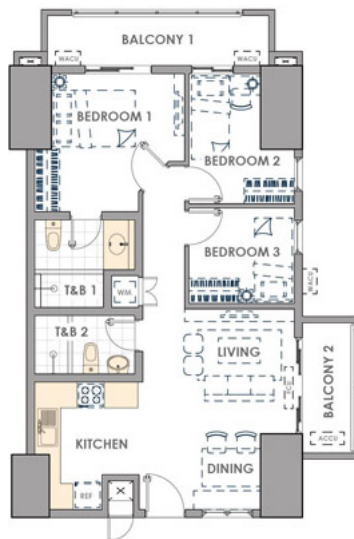


2-BEDROOM E INNER UNIT

AREA ALLOCATION

LIVING & DINING	13.20 sqm
KITCHEN	10.50
BEDROOM 1	10.65
BEDROOM 2	6.35
TOILET & BATH	4.80
BALCONY	8.00

APPROX. GROSS FLOOR AREA: 53.50 sqm

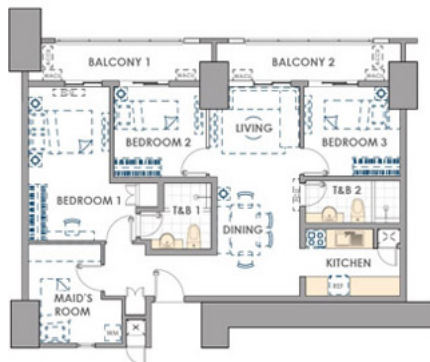


3-BEDROOM END UNIT

AREA ALLOCATION

LIVING & DINING	23.30 sqm
KITCHEN	8.60
BEDROOM 1	12.25
BEDROOM 2	9.25
BEDROOM 3	6.60
TOILET & BATH 1	5.90
TOILET & BATH 2	4.10
BALCONY 1	7.00
BALCONY 2	4.50

APPROX. GROSS FLOOR AREA: 81.50 sqm

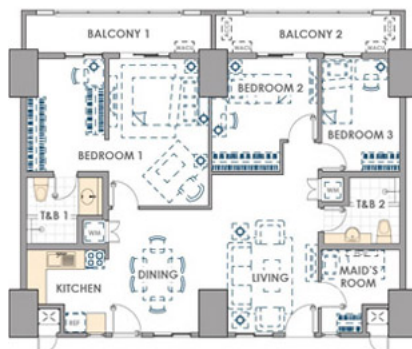


TANDEM UNIT A

AREA ALLOCATION

LIVING & DINING	26.50 sqm
KITCHEN	7.74
BEDROOM 1	15.80
BEDROOM 2	9.80
BEDROOM 3	10.03
MAID'S ROOM	9.93
TOILET & BATH 1	5.40
TOILET & BATH 2	4.80
BALCONY 1	8.00
BALCONY 2	8.00

APPROX. GROSS FLOOR AREA: 106.00 sqm



TANDEM UNIT B

AREA ALLOCATION

LIVING & DINING	33.05 sqm
KITCHEN	7.40
BEDROOM 1	26.20
BEDROOM 2	11.95
BEDROOM 3	10.10
MAID'S ROOM	7.50
TOILET & BATH 1	5.90
TOILET & BATH 2	5.90
BALCONY 1	8.00
BALCONY 2	8.00

APPROX. GROSS FLOOR AREA: 124.00 sqm

Fairlane Residences - Amenities and Facilities

Below is a photo of the amenities of the project. First of all, the use of outdoor amenities is free to use to all residents. In addition to that, guests of residents may also make use of the amenities and facilities depending on the policy of the property management office of Fairlane Residences.

Outdoor Amenities

- Pool Deck
- Gazebo / Cabana
- Children's Playground
- View Deck
- Sky Park / Roof Deck
- Shower Area
- Kiddie Pool
- Lap Pool

- Landscaped Gardens

Indoor Amenities

- Open Lounge
- Children's Recreation Space / Daycare
- Function Hall
- Study Room
- Sky Lounge
- Game Area
- Entertainment Room
- Fitness Gym
- Landscaped Atriums
- Lumiventt Technology

Facilities

- Main Entrance Gate
- Perimeter Fence
- 24-hour Security
- CCTV Cameras
- Water Station



